



Visiting the Renwick Gallery

SAAM's Renwick Gallery
Social Narrative



I am going to visit the **Renwick Gallery**.

It is part of the Smithsonian
American Art Museum in Washington, DC.

The Smithsonian American Art Museum is
also known as **SAAM**.



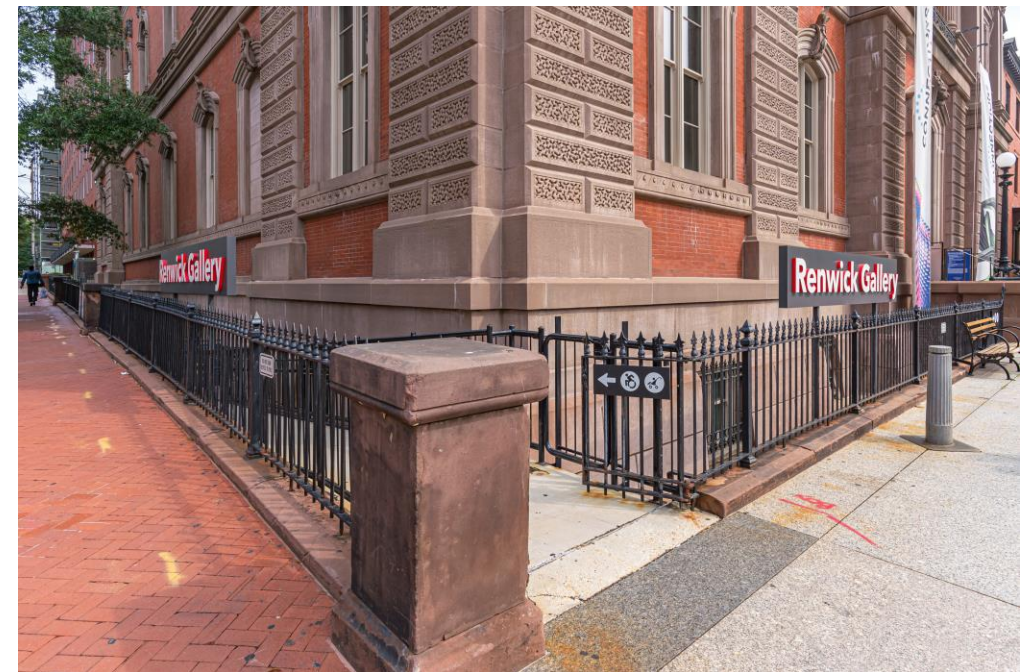


The museum is located on the corner of **17th Street and Pennsylvania Avenue NW**. It is near the White House and the area may be busy. I may hear loud noises, like car horns and voices of other people coming and going. I may also see different kinds of police officers.

When I arrive at the Renwick Gallery, I will enter through either the **main entrance** or the **accessible entrance**.

The main entrance is on Pennsylvania Avenue and has a short flight of steps.

The accessible entrance is on 17th street. It has an area for strollers, and there are wheelchairs available for visitors.



When it's time to enter the Renwick Gallery, I may need to **wait in line** with other people.



During my visit to the Renwick Gallery, I may wear a **face mask** if I would like to, but it is not required.

I may see signs reminding me of this.

Face Covering Optional
Cubierta facial opcional

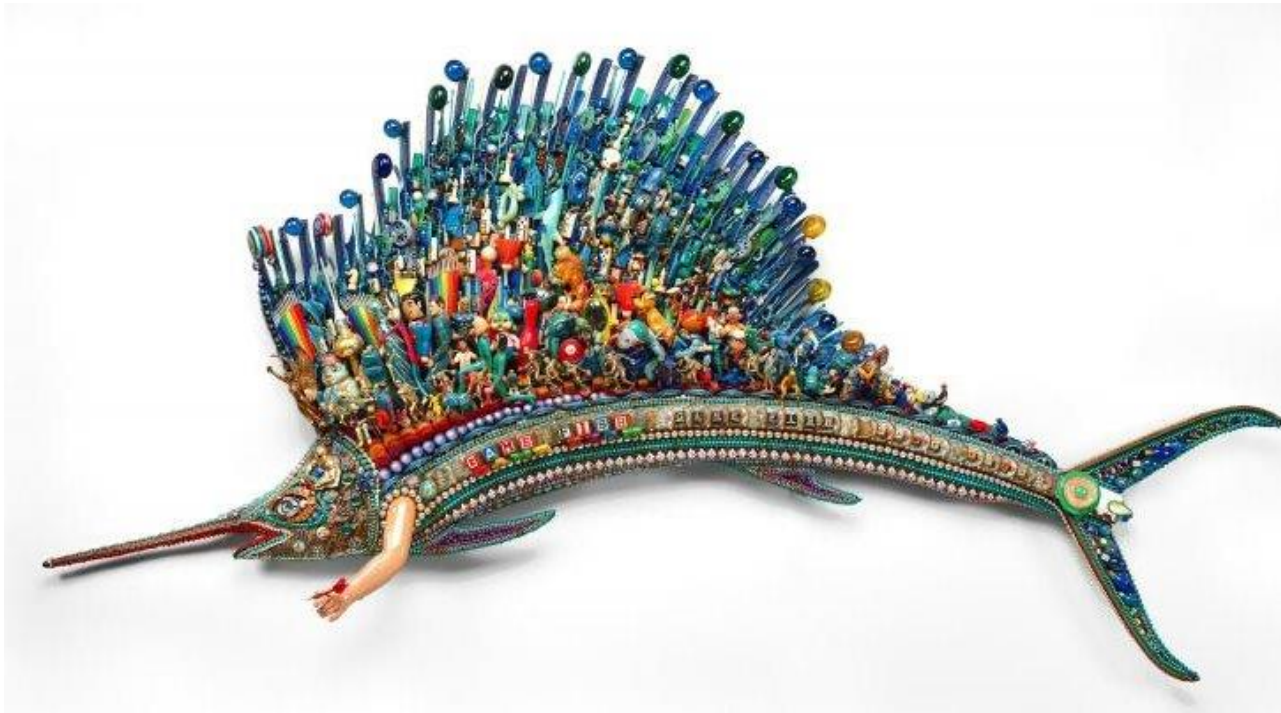




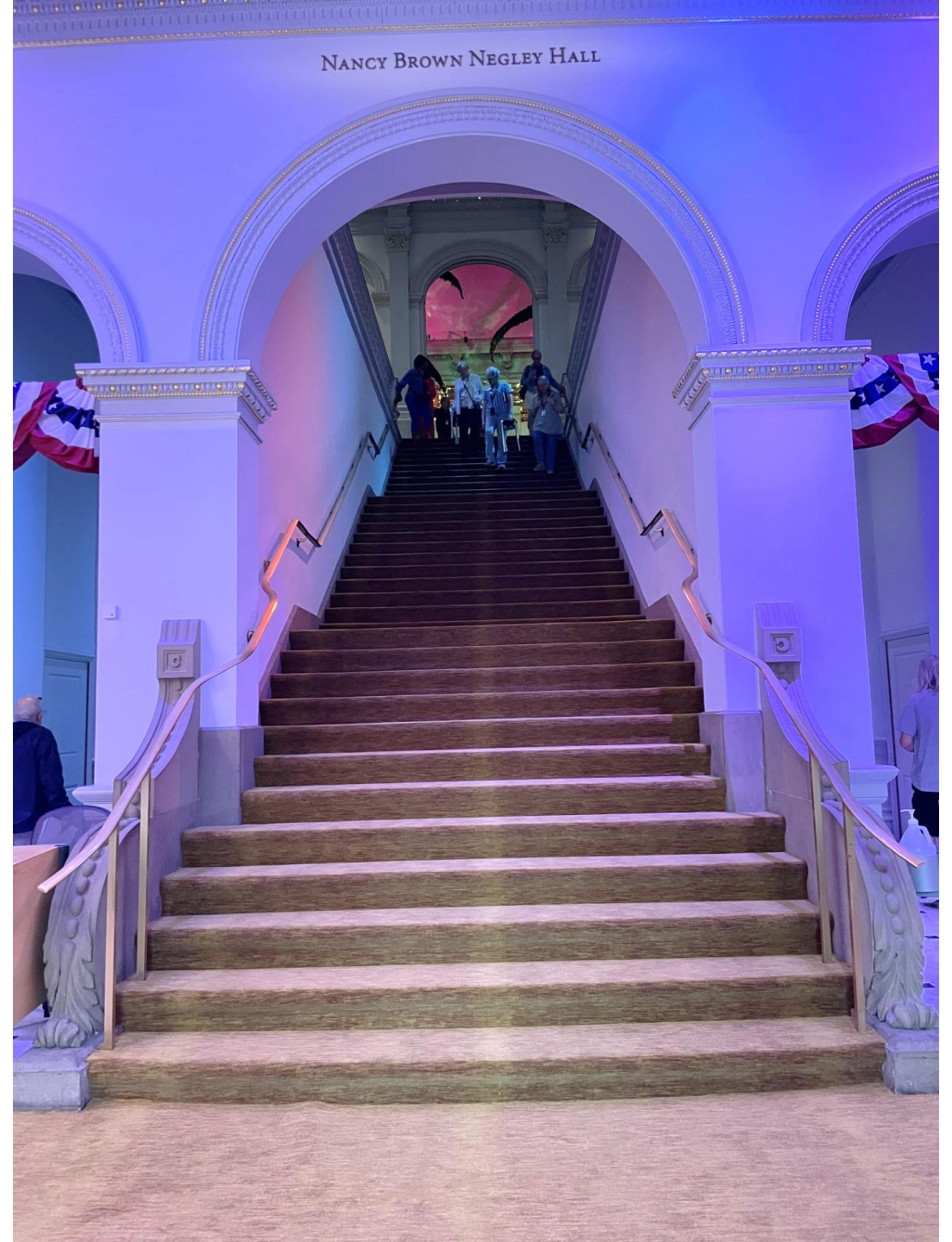
I will meet a **security officer** when I enter the gallery. Security officers are there to keep visitors, staff, and the art safe. If I have a bag, they will inspect it. If I have a **backpack**, they will ask me to hold it at my side or wear it on my front.



The Renwick Gallery exhibits contemporary American **craft and decorative art**. This may include objects made of glass, wood, ceramic, textiles, metal, and more.



Near the main lobby, there is a **large staircase** with a tan carpet going to the second floor. I should hold the railing when I go up and down the stairs. Or I can use the **elevator**.





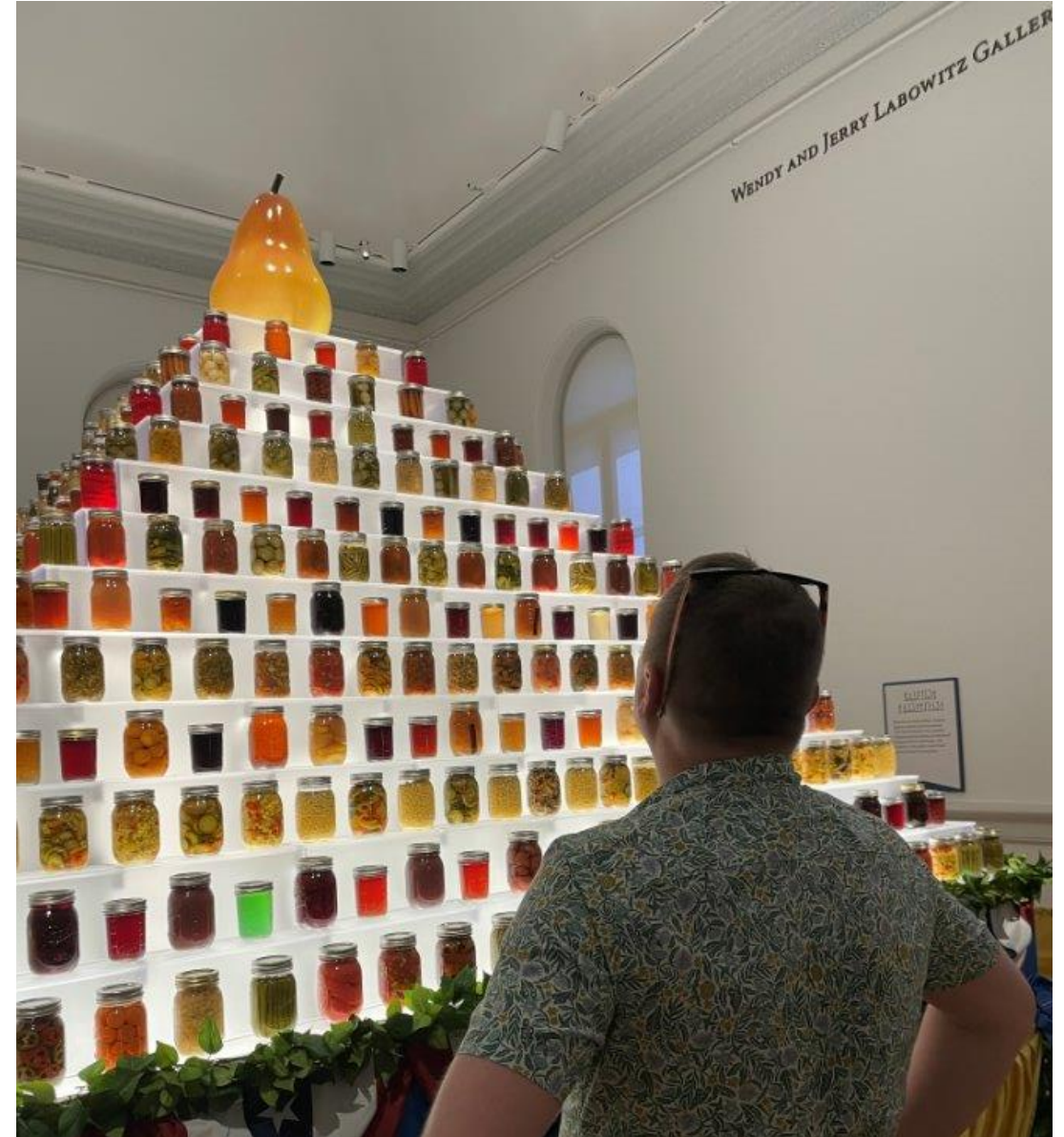
As I climb up the staircase, I will see a **light sculpture** by Leo Villareal above me. It has lots of twinkling LED lights that flash in different patterns.

In the **Grand Salon**, there is an installation artwork of cornstalks, by the artist Justin Favela. It has lights that slowly change color.



As I explore the museum, I will be careful **not to touch** any of the artworks and to maintain a safe, **arm's length distance** away from the art.

I may see stanchions or lines on the floor to help me keep my distance. Some of the artworks are protected by glass.



If I see art that draws my attention,
the Renwick Gallery encourages me to
take pictures to remember my visit.



Photography
encouraged
#RenwickGallery

When it is time to leave the museum,
I will exit through the doors on
Pennsylvania Avenue, or through the
accessible exit in the basement.

The Renwick staff hopes
that I'll remember my visit and **come
back soon!**

